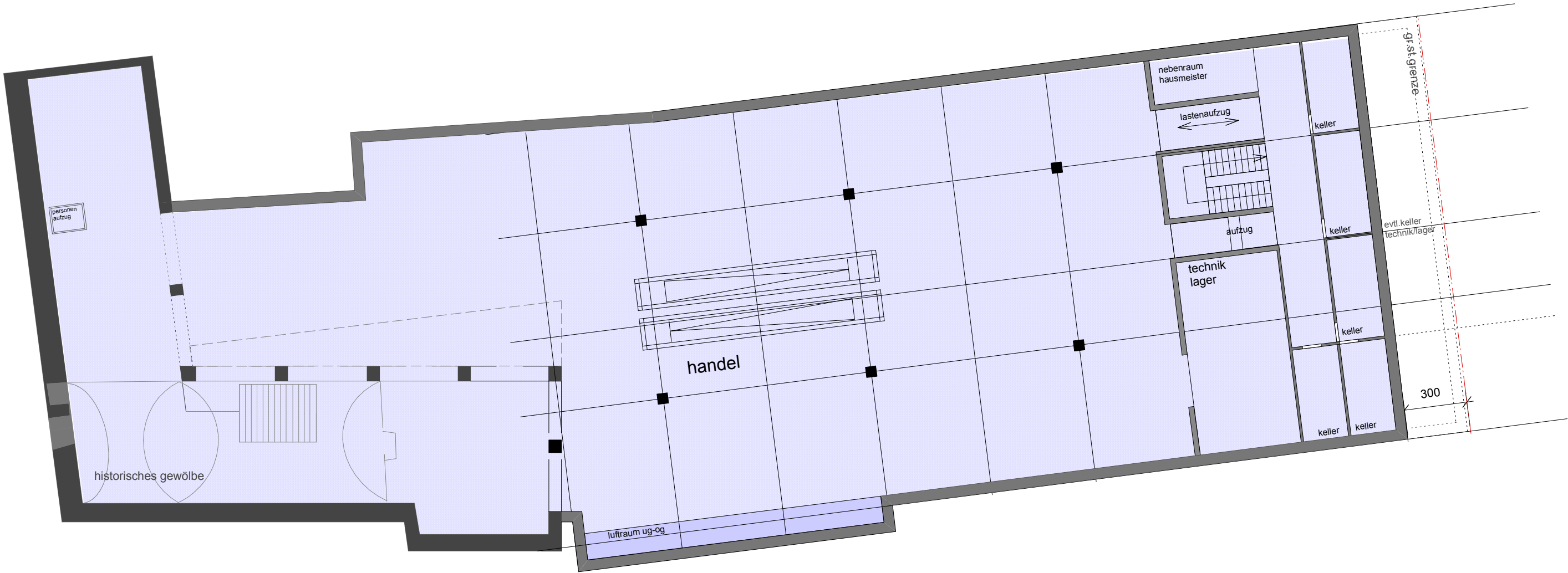
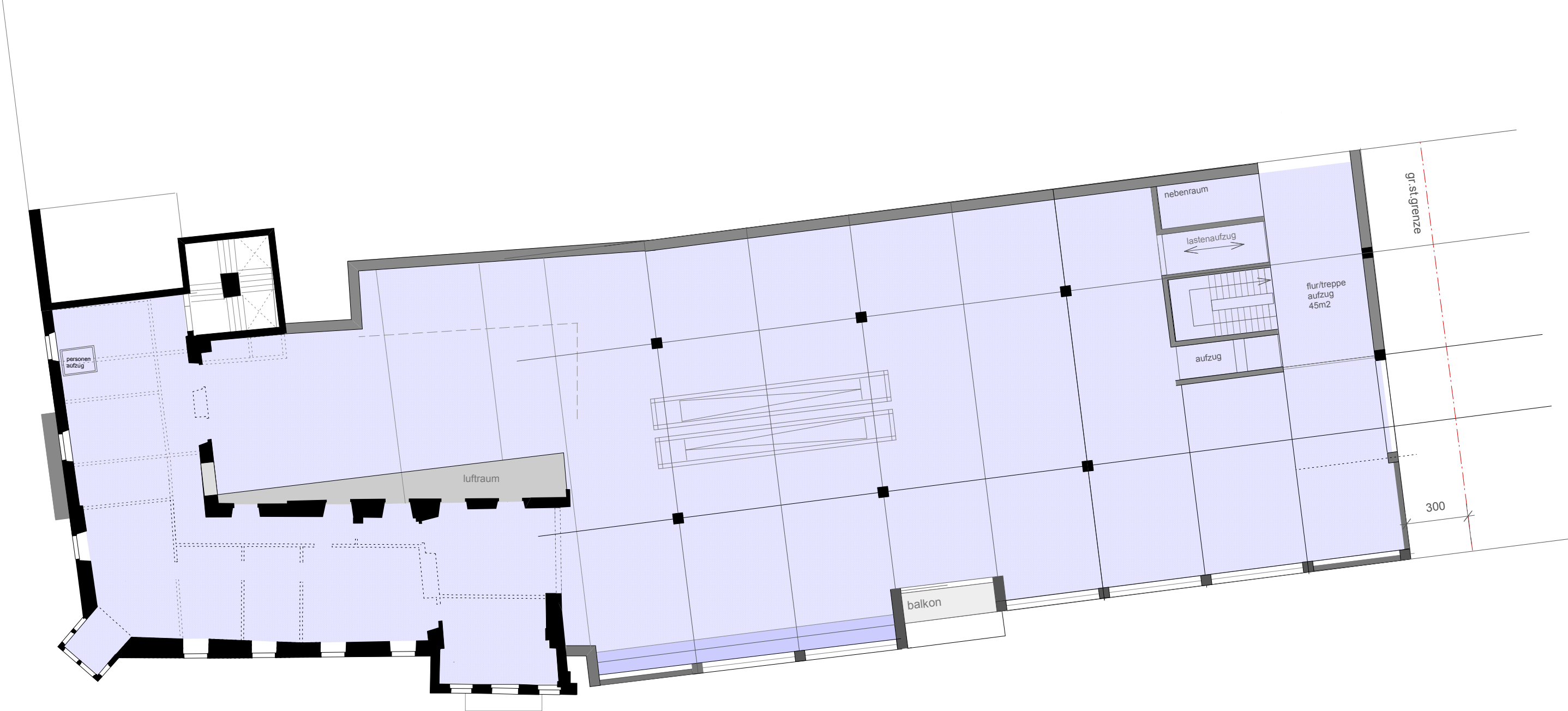


erdgeschoss \_ handel \_ 1100m2



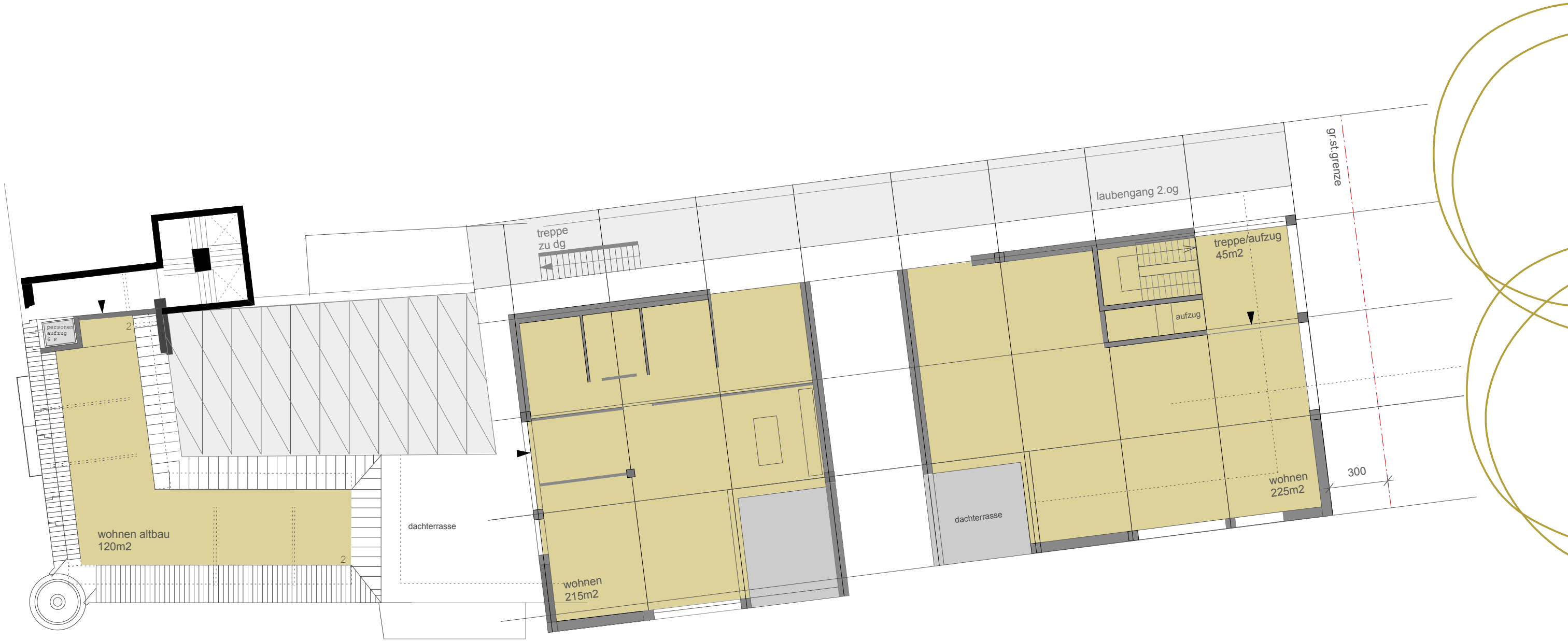
untermeschoss \_ handel \_ 1200m2



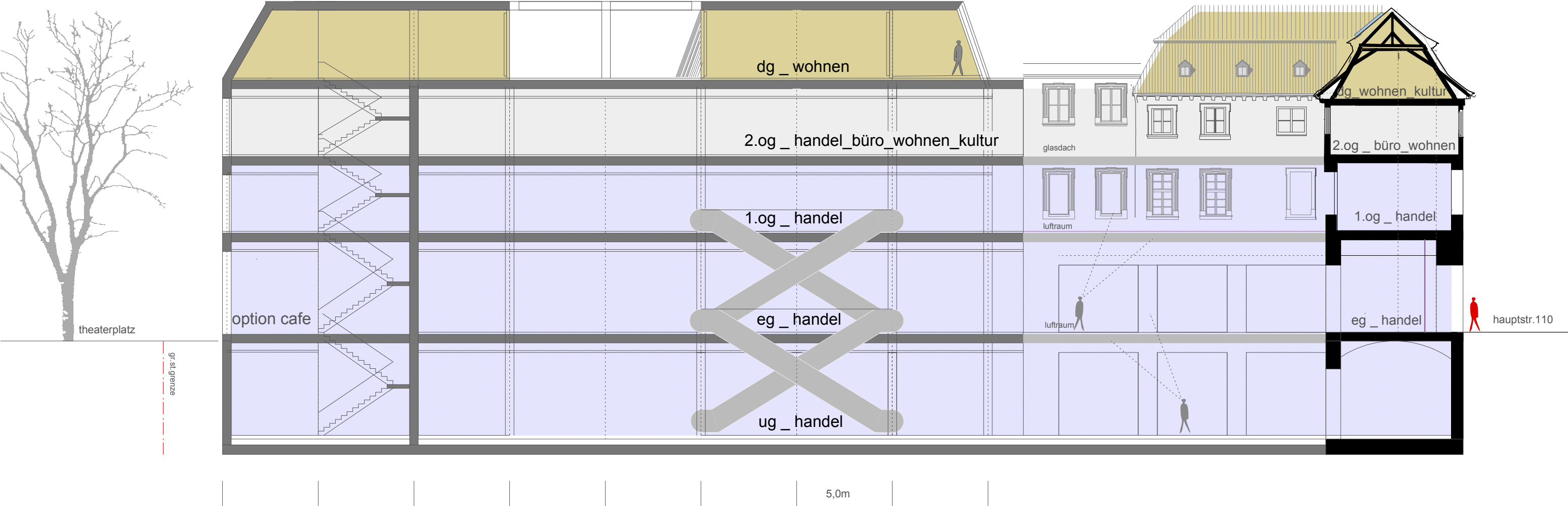
obergeschoss \_ 1 \_ handel \_ 1200m2



obergeschoss\_2\_ handel, büro, wohnen, kultur\_ 800m2



dachgeschoss\_ wohnen, kultur\_605m<sup>2</sup>



querschnitt \_ nutzfläche gesamt \_ 4905m2